

DIPLOMATS GOLFLINK

SECTOR 110, GURUGRAM



DIPLOMATS GOLFLINK

SECTOR 110, GURUGRAM





GOLFING TIME CAN BE TURNED INTO FAMILY TIME

Golfing can be a perfect activity for families. Kids can learn the basics from their parents while parents enjoy the game themselves. It's an outdoor activity that encourages conversations, ensures family bonding and allows families to spend quality time together. You won't ever regret a minute of it. You can spend some time in golfing every day because you have a plush golf course within your vicinity.



The Housing Project In Perspective

The 'Diplomats Golf Link' - a thoughtfully visualised, meticulously planned and elegantly crafted - is an upcoming 'Affordable Group Housing Project'. The entire complex is amplified by the incredible amount of green cover with a 3-HOLE GOLF COURSE already put in place. The Project being developed by the Millennium Group, with a vast experience of over 25 years in quality construction, in conjunction with a grouping of diplomats and other civilian and services officers. This has been initiated in view of consistent demand doing the round for quite some time now from many an officer in the Ministry of External Affairs, who are mostly posted in Indian Missions abroad, and such other officers who are deeply interested in a self-contained housing project. The Project has its License No.100/2019 from competent authority in Chandigarh.

The Project, a Premium Affordable Residential Entity, is located in Sector 110, Urban Estate, Gurgaon at a mere 05-10 minute drive from Dwarka and IGI Airport, New Delhi. The Housing Project is not designed to be just another cluster of towers, but an assortment of exquisitely crafted towers overlooking a lush green 3-hole Golf Course dotted with various species of trees in the self-contained complex.

The 100 meter frontage of the Project is almost directly thrown at the 150-meter wide, 18-km long Northern Peripheral Road [NPR], popularly known as Dwarka-Gurgaon Express Way from Dwarka in Delhi to Gurgaon. The Diplomats Golf Link, without exception - is one such premium affordable project set in with a 3-Hole Golf Course coupled with lush green environs, approximately 85% open space with 70% green - located right off the Dwarka-Gurgaon Express Way [NPR].

Vision

To creating housing solutions that make the earth a better place to live in.

Mission

To make every home owner forgetting the need for a holiday by providing every amenity they need to relax at the home.

Location Map



1 BHK 1 BHK



1 BHK: TYPE I		
CARPET AREA	37.00 SQ. MT.	398.27 SQ. FT.
BALCONY AREA	9.30 SQ. MT.	100.11 SQ. FT.



1 BHK: TYPE II		
CARPET AREA	35.52 SQ. MT.	382.34 SQ. FT.
BALCONY AREA	9.37 SQ. MT.	100.86 SQ. FT.

1 BHK: TYPE I (B)		
CARPET AREA	37.00 SQ. MT.	398.27 SQ. FT.
BALCONY AREA	9.32 SQ. MT.	100.32 SQ. FT.



1 BHK: TYPE III		
CARPET AREA	36.21 SQ. MT.	398.76 SQ. FT.
BALCONY AREA	9.30 SQ. MT.	100.11 SQ. FT.

1 BHK 1 BHK



1 BHK: TYPE III (B)		
CARPET AREA	37.00 SQ. MT.	398.27 SQ. FT.
BALCONY AREA	9.32 SQ. MT.	100.32 SQ. FT.



1 BHK: TYPE IV (T)		
CARPET AREA	36.64 SQ. MT.	394.39 SQ. FT.
BALCONY AREA	9.40 SQ. MT.	101.18 SQ. FT.

1 BHK: TYPE IV		
CARPET AREA	36.64 SQ. MT.	394.39 SQ. FT.
BALCONY AREA	9.40 SQ. MT.	101.18 SQ. FT.



1 BHK: TYPE V		
CARPET AREA	38.74 SQ. MT.	417.00 SQ. FT.
BALCONY AREA	9.30 SQ. MT.	100.11 SQ. FT.



1 BHK 2 BHK

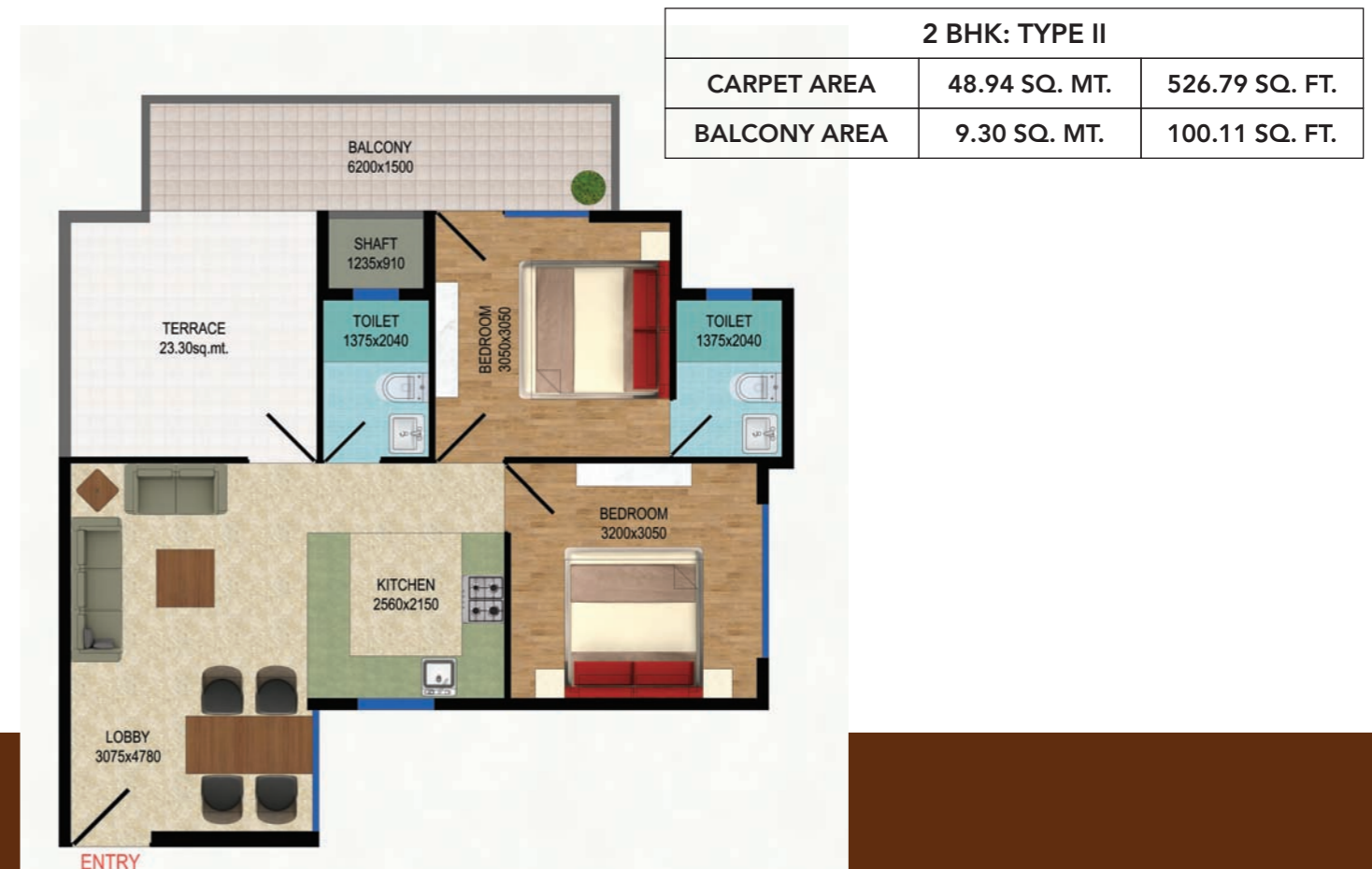


1 BHK: TYPE VI		
CARPET AREA	38.95 SQ. MT.	419.26 SQ. FT.
BALCONY AREA	7.98 SQ. MT.	85.90 SQ. FT.



2 BHK: TYPE I		
CARPET AREA	50.42 SQ. MT.	542.72 SQ. FT.
BALCONY AREA	9.38 SQ. MT.	100.97 SQ. FT.

1 BHK: TYPE VI (T)		
CARPET AREA	38.95 SQ. MT.	419.26 SQ. FT.
BALCONY AREA	7.98 SQ. MT.	85.90 SQ. FT.



2 BHK: TYPE II		
CARPET AREA	48.94 SQ. MT.	526.79 SQ. FT.
BALCONY AREA	9.30 SQ. MT.	100.11 SQ. FT.

2 BHK 2 BHK



2 BHK: TYPE III		
CARPET AREA	48.48 SQ. MT.	521.84 SQ. FT.
BALCONY AREA	6.97 SQ. MT.	75.03 SQ. FT.



2 BHK: TYPE IV		
CARPET AREA	47.60 SQ. MT.	512.37 SQ. FT.
BALCONY AREA	9.37 SQ. MT.	100.86 SQ. FT.

2 BHK: TYPE III (B)		
CARPET AREA	48.48 SQ. MT.	521.84 SQ. FT.
BALCONY AREA	9.01 SQ. MT.	96.98 SQ. FT.



2 BHK: TYPE V		
CARPET AREA	49.58 SQ. MT.	533.68 SQ. FT.
BALCONY AREA	10.38 SQ. MT.	111.52 SQ. FT.

2 BHK 2 BHK



2 BHK: TYPE V (T)		
CARPET AREA	49.58 SQ. MT.	533.68 SQ. FT.
BALCONY AREA	10.36 SQ. MT.	111.52 SQ. FT.

2 BHK: TYPE VI		
CARPET AREA	50.92 SQ. MT.	548.10 SQ. FT.
BALCONY AREA	10.89 SQ. MT.	117.22 SQ. FT.



2 BHK: TYPE VII		
CARPET AREA	52.48 SQ. MT.	564.89 SQ. FT.
BALCONY AREA	10.15 SQ. MT.	109.25 SQ. FT.



2 BHK: TYPE VIII		
CARPET AREA	52.48 SQ. MT.	664.68 SQ. FT.
BALCONY AREA	7.98 SQ. MT.	85.90 SQ. FT.



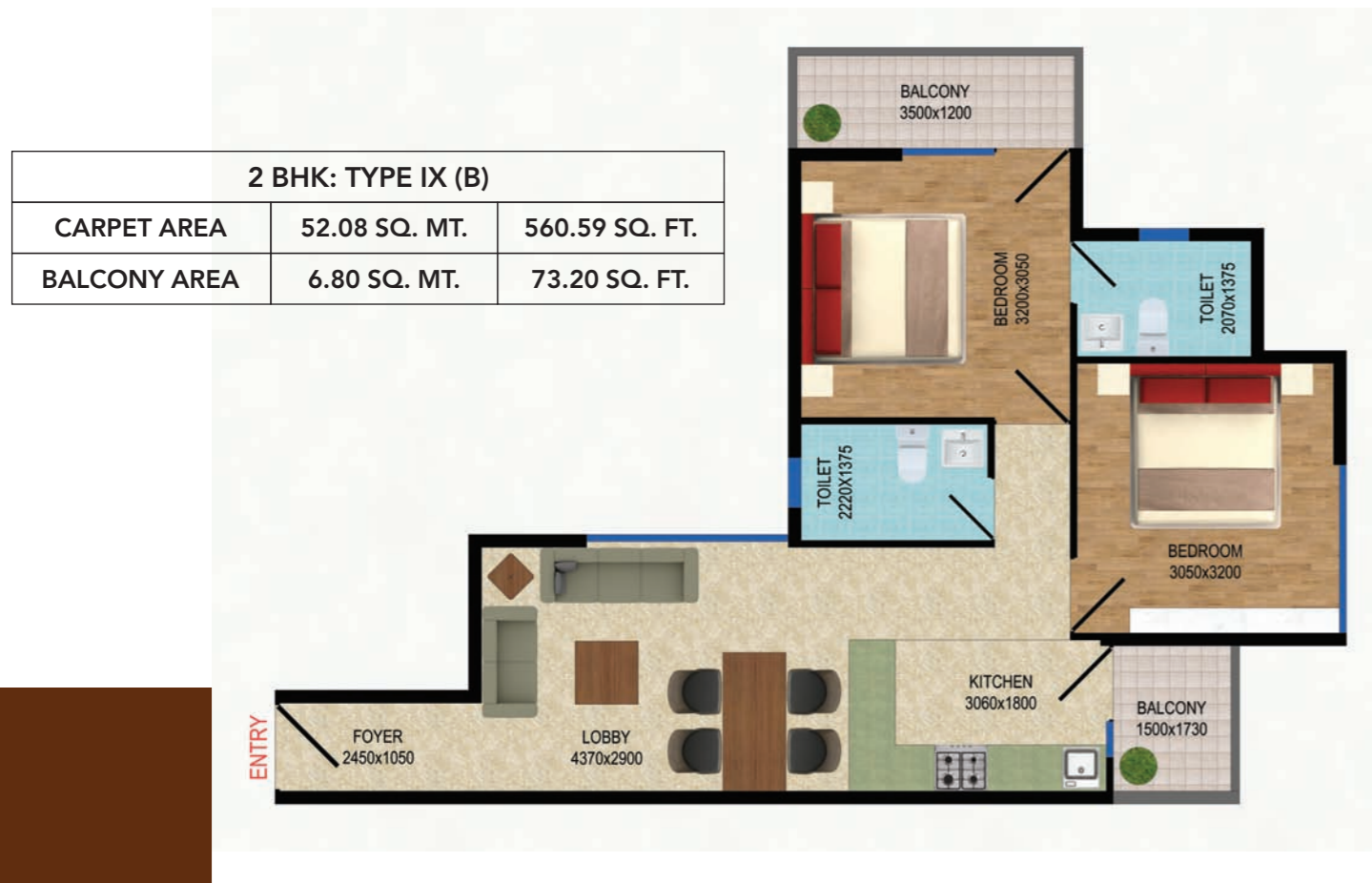
2 BHK 2 BHK



2 BHK: TYPE IX		
CARPET AREA	52.08 SQ. MT.	560.59 SQ. FT.
BALCONY AREA	9.45 SQ. MT.	101.72 SQ. FT.



2 BHK: TYPE X		
CARPET AREA	52.15 SQ. MT.	561.34 SQ. FT.
BALCONY AREA	9.45 SQ. MT.	101.72 SQ. FT.



2 BHK: TYPE IX (B)		
CARPET AREA	52.08 SQ. MT.	560.59 SQ. FT.
BALCONY AREA	6.80 SQ. MT.	73.20 SQ. FT.

3 BHK 3 BHK



3 BHK: TYPE I		
CARPET AREA	59.27 SQ. MT.	637.98 SQ. FT.
BALCONY AREA	9.30 SQ. MT.	111.52 SQ. FT.



3 BHK: TYPE II (M)		
CARPET AREA	59.51 SQ. MT.	644.98 SQ. FT.
BALCONY AREA	9.33 SQ. MT.	100.43 SQ. FT.

3 BHK: TYPE II		
CARPET AREA	59.51 SQ. MT.	640.57 SQ. FT.
BALCONY AREA	9.33 SQ. MT.	100.43 SQ. FT.



3 BHK: TYPE III		
CARPET AREA	59.92 SQ. MT.	644.98 SQ. FT.
BALCONY AREA	9.30 SQ. MT.	100.11 SQ. FT.

3 BHK 3 BHK



3 BHK: TYPE IV		
CARPET AREA	59.99 SQ. MT.	643.75 SQ. FT.
BALCONY AREA	10.36 SQ. MT.	111.52 SQ. FT.



3 BHK: TYPE V		
CARPET AREA	56.07 SQ. MT.	603.54 SQ. FT.
BALCONY AREA	8.70 SQ. MT.	93.65 SQ. FT.

3 BHK: TYPE IV (B)		
CARPET AREA	59.99 SQ. MT.	645.73 SQ. FT.
BALCONY AREA	9.29 SQ. MT.	100.00 SQ. FT.

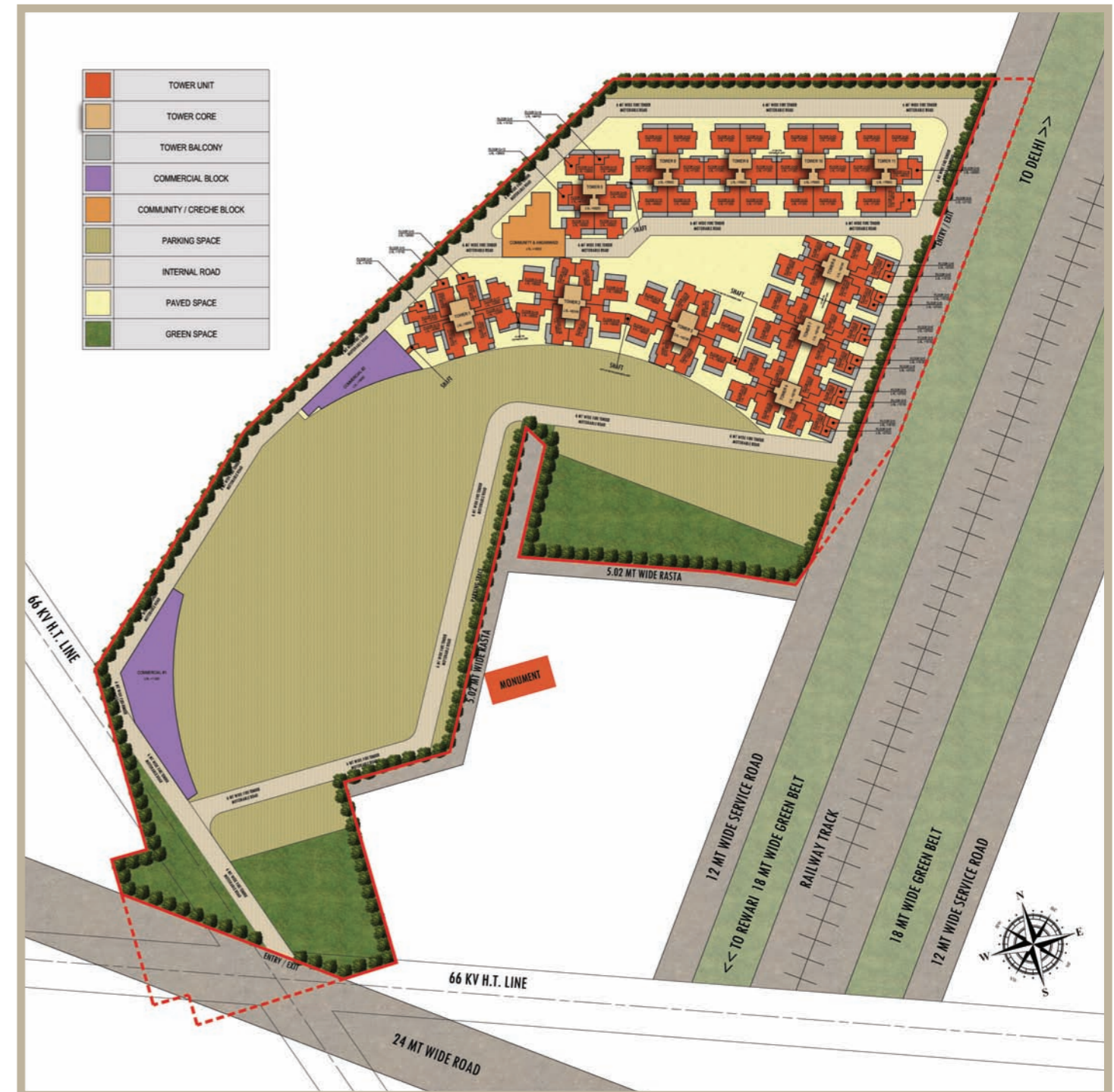


3 BHK: TYPE V (B)		
CARPET AREA	56.07 SQ. MT.	603.54 SQ. FT.
BALCONY AREA	8.24 SQ. MT.	88.70 SQ. FT.



3 BHK SITE PLAN

3 BHK: TYPE VI		
CARPET AREA	59.99 SQ. MT.	645.73 SQ. FT.
BALCONY AREA	9.44 SQ. MT.	101.61 SQ. FT.





DIPLOMATS
GOLF LINK

SECTOR 110, GURUGRAM

MILLENNIUM DIPLOMATS PRIVATE LIMITED
License No: 100 of 2019

Call : +91 92509-33999

Disclaimer:

1. The sizes / shapes / positions of openings, ducts, balconies and landscape are subject to change.
2. Room sizes indicated are structural sizes and actual sizes may vary due to finishes.
3. Areas mentioned are subject to change after finalization of services and structural design.
4. The furniture shown in the drawing is only to indicate the space available and the likely position of electrical points.
5. The plot sizes and plans are subject to changes following final statutory approvals and detail design of services.
All plans, specifications, artistic renderings and images as shown in this brochure are only indicative and are subject to change as may be decided by the company or directed by any competent authority in the best interests of the development. Soft furnishing, furniture and gadgets do not form a part of the offering.