



jointly presents



ELEMENT ONE

SECTOR 47 & 49, GURGAON



**HIGHSTREET RETAIL &
PRIVATE BUSINESS SUITES**

HIGHSTREET RETAIL

HIGHSTREET SHOPPING

SUPERMARKET & LUXE BRANDS

FOOD COURT & FINE DINING

FUN AND ENTERTAINMENT

PRIVATE BUSINESS SUITES

BUSINESS CENTRE & LOUNGE

LOBBY & CONCIERGE SERVICES

24x7 EXCLUSIVE SERVICES

SHOPPING & ENTERTAINMENT

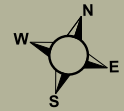


ELEMENT ONE

SECTOR 47 & 49, GURGAON

LEGENDS

| Residential Sectors | Walking Distances |
|--------------------------------|-------------------|
| NH-08 Highway | 10 Minutes |
| HUDA City Centre Metro Station | 10 Minutes |
| Rajiv Chowk | 10 Minutes |
| IFFCO Chowk | 15 Minutes |
| Gurgaon Toll | 25 Minutes |
| IGI Airport | 35 Minutes |



site plan

ELEMENT ONE

SECTOR 47 & 49, GURGAON



floor plan

ELEMENT ONE

SECTOR 47 & 49, GURGAON



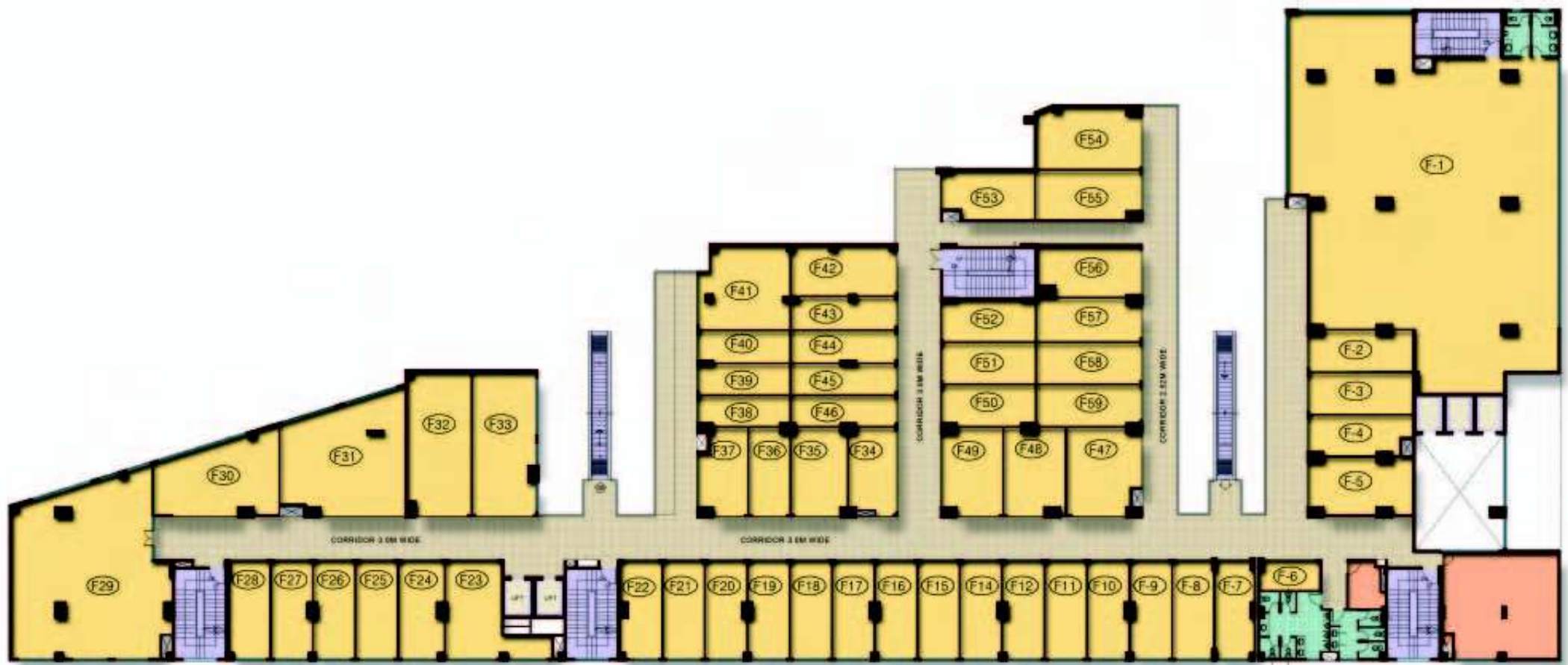
GROUND FLOOR PLAN (BLOCK-B)
(NOT TO SCALE)

LICENCE NO. 86 OF 2011

floor plan

ELEMENT ONE

SECTOR 47 & 49, GURGAON



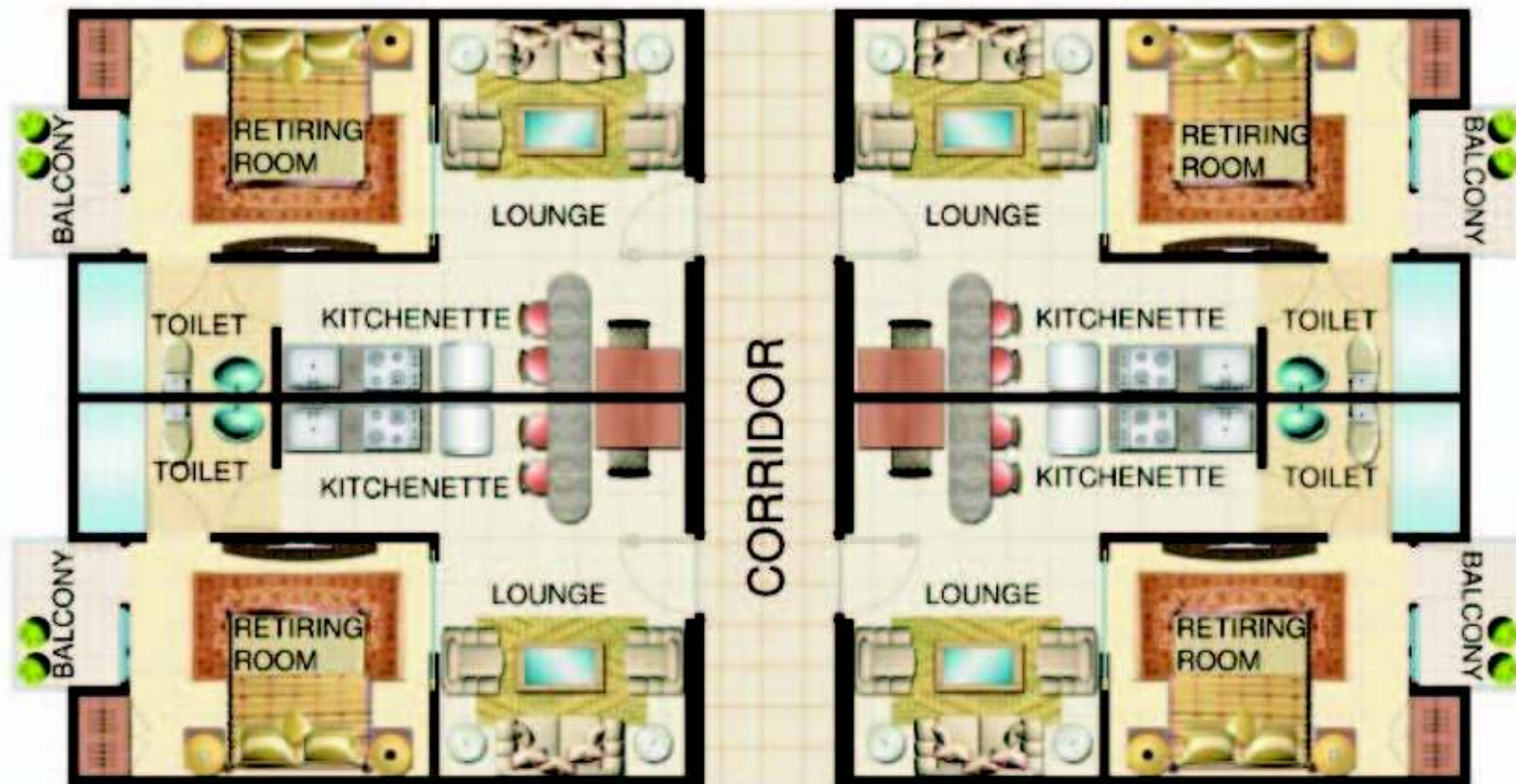
FIRST FLOOR PLAN (BLOCK-B)
(NOT TO SCALE)

LICENCE NO. 86 OF 2011

floor plan

ELEMENT ONE

SECTOR 47 & 49, GURGAON



TENTATIVE UNIT PLAN 625 sq. ft. area
(NOT TO SCALE)

Payment Plan (Time / Construction Linked) Sector - 47 & 49, Gurgaon, Haryana

| Description | %age |
|---|------------------------------|
| At the time of registration | 3 Lacs |
| Within 30 days from date of registration | 10% less registration amount |
| Within 60 days from date of registration | 10% |
| On commencement of first basement roof slab | 7.5% + (50% of EDC & IDC) |
| On commencement of top basement roof slab | 7.5% + (50% of EDC & IDC) |
| On commencement of 2nd floor roof slab | 7.5% + (50% of PLC) |
| On commencement of 4th floor roof slab | 7.5% + (50% of PLC) |
| On commencement of 6th floor roof Slab | 7.5% |
| On commencement of top floor roof slab | 7.5% |
| On commencement of brick work | 7.5% |
| On commencement of external façade | 7.5% |
| On commencement of flooring | 7.5% |
| On commencement of interior work | 7.5% |
| At the time of offering possession | 5%+ other charges* |

Note :

- 1 sq.mtr. = 10.764 sq.ft.
- Service tax / taxes as applicable.
- PLC(Preferential Location Charges), if applicable payable extra.
- EDC & IDC, payable extra as applicable, as & when demanded by the company.
- The facility of "Right To Use" one car park space will be allowed at cost and assigned specifically and parking of any additional vehicle will be permitted subject to availability of space at cost.
- Payment plan scheme subject to change / revision / availability / withdrawal at anytime & sole discretion of the company.
- * Maintenance, security & charges, ECC, stamp duty & registration charge, misc. etc. & payable extra.

| Price List | | |
|-------------------|-----------------|-------------------------|
| Unit Type | Floor | Rate Per Sq. Ft. |
| Retail shops | Ground | As applicable |
| Retail shops | Ground | As applicable |
| Service apartment | Second on wards | As applicable |
| EDC & IDC | | 550 |
| ECC | | 150 |
| IFMS | | 100 |

| PLC as Applicable | | |
|--------------------------|--|------|
| Type A | | 2000 |
| Type B | | 1500 |
| Type C | | 1000 |
| Type D | | 750 |

TENTATIVE UNIT AREA

ELEMENT ONE AT SEC.47, 49 GURGAON (HARYANA)

GROUND FLOOR

| Unit. No. | Built - Up Area | | Super Area | | Unit. No. | Built - Up Area | | Super Area | |
|-----------|-----------------|---------|------------|---------|-----------|-----------------|---------|------------|---------|
| | Sq. mt. | Sq. ft. | Sq. mt. | Sq. ft. | | Sq. mt. | Sq. ft. | Sq. mt. | Sq. ft. |
| G 01 | 443.36 | 4772.33 | 806.11 | 8676.96 | G 36 | 22.10 | 237.88 | 40.18 | 432.52 |
| G 02 | 27.30 | 293.86 | 49.64 | 534.29 | G 37 | 22.23 | 239.28 | 40.42 | 435.06 |
| G 03 | 27.18 | 292.57 | 49.42 | 531.94 | G 38 | 26.23 | 282.34 | 47.69 | 513.34 |
| G 04 | 26.05 | 280.40 | 47.36 | 509.82 | G 39 | 19.08 | 205.38 | 34.64 | 373.41 |
| G 05 | 14.41 | 155.11 | 26.20 | 282.02 | G 40 | 19.05 | 205.05 | 34.69 | 372.83 |
| G 06 | 9.89 | 106.46 | 17.98 | 193.56 | G 41 | 12.31 | 132.50 | 22.38 | 240.92 |
| G 07 | 20.91 | 225.08 | 38.02 | 409.23 | G 42 | 16.33 | 175.78 | 29.69 | 319.59 |
| G 08 | 21.52 | 231.64 | 39.13 | 421.17 | G 43 | 16.37 | 176.21 | 29.76 | 320.38 |
| G 09 | 21.52 | 231.64 | 39.13 | 421.17 | G 44 | 17.13 | 184.39 | 31.15 | 335.25 |
| G 10 | 21.52 | 231.64 | 39.13 | 421.17 | G 45 | 10.05 | 108.18 | 18.27 | 196.69 |
| G 11 | 21.52 | 231.64 | 39.13 | 421.17 | G 46 | 16.63 | 179.01 | 30.24 | 325.46 |
| G 12 | 21.52 | 231.64 | 39.13 | 421.17 | G 47 | 18.34 | 197.41 | 33.35 | 358.93 |
| G 14 | 21.52 | 231.64 | 39.13 | 421.17 | G 48 | 18.34 | 197.41 | 33.35 | 358.93 |
| G 15 | 21.52 | 231.64 | 39.13 | 421.17 | G 49 | 17.30 | 186.22 | 31.4 | 338.58 |
| G 16 | 21.52 | 231.64 | 39.13 | 421.17 | G 50 | 10.61 | 114.21 | 519.29 | 207.65 |
| G 17 | 21.52 | 231.64 | 39.13 | 421.17 | G 51 | 19.97 | 214.96 | 36.31 | 390.83 |
| G 18 | 21.52 | 231.64 | 39.13 | 421.17 | G 52 | 19.08 | 205.38 | 34.69 | 373.41 |
| G 19 | 21.52 | 231.64 | 39.13 | 421.17 | G 53 | 19.05 | 205.05 | 34.64 | 372.83 |
| G 20 | 21.52 | 231.64 | 39.13 | 421.17 | G 54 | 29.97 | 322.60 | 54.49 | 586.54 |
| G 21 | 21.52 | 231.64 | 39.13 | 421.17 | G 55 | 19.08 | 205.38 | 34.69 | 373.41 |
| G 22 | 22.05 | 237.35 | 40.09 | 431.54 | G 56 | 19.08 | 205.38 | 34.69 | 373.41 |
| G 23 | 38.11 | 410.22 | 69.29 | 745.85 | G 57 | 31.27 | 336.59 | 56.85 | 611.98 |
| G 24 | 21.52 | 231.64 | 39.13 | 421.17 | G 58 | 20.62 | 218.51 | 36.91 | 397.29 |
| G 25 | 21.52 | 231.64 | 39.13 | 421.17 | G 59 | 20.30 | 218.51 | 36.91 | 397.29 |
| G 26 | 21.52 | 231.64 | 39.13 | 421.17 | G 60 | 20.30 | 221.95 | 37.49 | 403.55 |
| G 27 | 21.52 | 231.64 | 39.13 | 421.17 | G 61 | 36.38 | 391.59 | 66.15 | 711.99 |
| G 28 | 21.92 | 235.95 | 39.85 | 428.99 | G 62 | 22.93 | 246.82 | 41.69 | 448.76 |
| G 29 | 129.30 | 1391.79 | 235.09 | 2530.52 | G 63 | 18.37 | 197.73 | 33.40 | 359.52 |
| G 30 | 47.59 | 512.26 | 86.53 | 931.38 | G 64 | 29.78 | 320.55 | 54.15 | 582.82 |
| G 31 | 70.98 | 764.03 | 129.05 | 1389.14 | G 65 | 27.12 | 291.92 | 49.31 | 530.76 |
| G 32 | 22.08 | 237.67 | 40.15 | 432.13 | G 66 | 24.55 | 264.26 | 44.64 | 480.47 |
| G 33 | 23.32 | 251.02 | 42.40 | 456.39 | G 67 | 28.58 | 307.64 | 51.96 | 559.34 |
| G 34 | 14.30 | 153.93 | 26.00 | 279.86 | G 68 | 27.22 | 293.00 | 49.49 | 532.72 |
| G 35 | 15.42 | 165.98 | 28.04 | 301.78 | G 69 | 27.22 | 293.00 | 49.49 | 532.72 |

Note: 1 Sq. mtr. = 10.764 Sq. Ft. Units subject to change / revision / availability, at the sole discretion of the company.

TENTATIVE UNIT AREA

ELEMENT ONE AT SEC.47, 49 GURGAON (HARYANA)

FIRST FLOOR

| Unit No. | Built - Up Area | | Super Area | | Unit No. | Built - Up Area | | Super Area | |
|----------|-----------------|---------|------------|---------|----------|-----------------|---------|------------|---------|
| | Sq. mt. | Sq. ft. | Sq. mt. | Sq. ft. | | Sq. mt. | Sq. ft. | Sq. mt. | Sq. ft. |
| F01 | 430.47 | 4633.58 | 782.67 | 8424.69 | F31 | 70.99 | 764.14 | 129.07 | 1389.34 |
| F02 | 22.78 | 245.20 | 41.42 | 445.83 | F32 | 40.07 | 431.31 | 72.85 | 784.21 |
| F03 | 22.68 | 244.13 | 41.24 | 443.87 | F33 | 49.13 | 528.84 | 89.33 | 961.52 |
| F04 | 21.08 | 226.91 | 38.33 | 412.55 | F34 | 22.38 | 240.90 | 40.69 | 438.00 |
| F05 | 32.84 | 353.49 | 59.71 | 642.71 | F35 | 25.65 | 276.10 | 46.64 | 501.99 |
| F06 | 9.87 | 106.24 | 17.95 | 193.16 | F36 | 19.08 | 205.38 | 34.69 | 373.41 |
| F07 | 20.80 | 223.89 | 37.82 | 407.07 | F37 | 21.67 | 233.26 | 39.40 | 424.10 |
| F08 | 21.52 | 231.64 | 39.13 | 421.17 | F38 | 14.95 | 160.92 | 27.18 | 292.59 |
| F09 | 21.52 | 231.64 | 39.13 | 421.17 | F39 | 14.96 | 161.03 | 27.20 | 292.78 |
| F10 | 21.52 | 231.64 | 39.13 | 421.17 | F40 | 15.43 | 166.09 | 28.05 | 301.98 |
| F11 | 21.52 | 231.64 | 39.13 | 421.17 | F41 | 39.17 | 421.63 | 71.22 | 766.59 |
| F12 | 21.52 | 231.64 | 39.13 | 421.17 | F42 | 28.26 | 304.19 | 51.38 | 553.07 |
| F14 | 21.52 | 231.64 | 39.13 | 421.17 | F43 | 18.22 | 196.12 | 33.13 | 356.58 |
| F15 | 21.52 | 231.64 | 39.13 | 421.17 | F44 | 17.53 | 188.69 | 31.87 | 343.08 |
| F16 | 21.52 | 231.64 | 39.13 | 421.17 | F45 | 17.11 | 184.17 | 31.11 | 334.86 |
| F17 | 21.52 | 231.64 | 39.13 | 421.17 | F46 | 17.00 | 182.99 | 30.91 | 332.71 |
| F18 | 21.52 | 231.64 | 39.13 | 421.17 | F47 | 32.75 | 352.52 | 59.55 | 640.95 |
| F19 | 21.52 | 231.64 | 39.13 | 421.17 | F48 | 28.27 | 304.30 | 51.40 | 553.27 |
| F20 | 21.52 | 231.64 | 39.13 | 421.17 | F49 | 28.30 | 304.62 | 51.45 | 553.86 |
| F21 | 21.52 | 231.64 | 39.13 | 421.17 | F50 | 20.31 | 218.62 | 36.93 | 397.49 |
| F22 | 21.98 | 236.59 | 39.96 | 430.17 | F51 | 20.31 | 218.62 | 36.93 | 397.49 |
| F23 | 35.65 | 383.74 | 64.82 | 697.70 | F52 | 20.62 | 221.95 | 37.49 | 403.55 |
| F24 | 23.74 | 255.54 | 43.16 | 464.61 | F53 | 24.21 | 260.60 | 44.02 | 473.81 |
| F25 | 21.52 | 231.64 | 39.13 | 421.17 | F54 | 35.19 | 378.79 | 63.98 | 688.70 |
| F26 | 21.52 | 231.64 | 39.13 | 421.17 | F55 | 28.06 | 302.04 | 51.02 | 549.16 |
| F27 | 21.52 | 231.64 | 39.13 | 421.17 | F56 | 27.17 | 292.46 | 49.40 | 531.74 |
| F28 | 21.92 | 235.95 | 39.85 | 428.99 | F57 | 23.76 | 255.75 | 43.20 | 465.00 |
| F29 | 136.40 | 1468.21 | 248.00 | 2669.47 | F58 | 22.62 | 243.48 | 41.13 | 442.69 |
| F30 | 47.59 | 512.26 | 86.53 | 931.38 | F59 | 22.62 | 243.48 | 41.13 | 442.69 |

Note: 1 Sq. mtr. = 10.764 Sq. Ft. Units subject to change / revision / availability, at the sole discretion of the company.



DELIVERING THE BEST.

Satya and Maple have an illustrious track record in the Real Estate Industry spanning well over four decades. The companies have today emerged as a leading integrated Real Estate players developing a well diversified portfolio encompassing upscale condominiums, mixed-use office, retail spaces and hospitality properties on a pan-India basis.

The promoters of the companies have together delivered various landmark projects such as “The Galaxy” - 5-Star Hotel & Shopping Spa, “Centrum Plaza” - Office Complex, “The Legend” - Luxury Residential Group Housing.

Maple Group itself has been active in the Real Estate Industry and boasts about projects such as , “Maple Heights & Maple Crescent” - A Residential Condominium in Gurgaon, Haryana, “Maple Corporate Park” - Noida.

Satya Group has been a leading brand name in the Real Estate Industry having developed various projects in Delhi and various landmark projects such as “Malwa County” - 110 Acre Integrated Township on Agra Mumbai Highway, Indore, M.P. “Malwa Heights- Premium Mid rise apartments, “Malwa Jewels- Luxury Villas, Indore, M.P., “THE HERMITAGE” - Premium Residential Group Housing Project at Sector 103, Dwarka- Gurgaon Expressway, Gurgaon & “City Centre” - Shopping cum Entertainment Centre, Bhatinda, Punjab.

COMPLETED
PROJECTS
BY THE
PROMOTERS



THE GALAXY, 5 Star Hotel, Luxury Shopping and Spa, NH-8, Gurgaon



THE LEGEND
Premium Residential Group Housing Project
Sector 57, Sushant Lok, Gurgaon



CENTRUM PLAZA
Premium Office Complex
Sector 53, Golf Course Road, Gurgaon



MALWA COUNTY
110 Acre Integrated Township
Agra- Mumbai Highway, Indore (MP)



CITY CENTRE
Shopping cum Entertainment Centre
Mini Secretariat, Bhatinda, Punjab

THANK YOU

For more information

sales@satyadevelopers.com | Toll Free: 1800 3000 4441 | sms 'SATYA' to 53030 | www.satyagroups.in